

Anchorage Youth Symphony

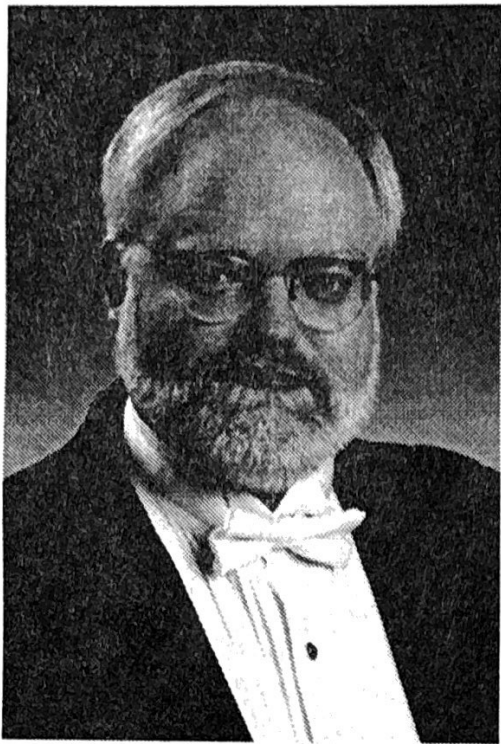
Tuesday, May 7, 2002 at 7:30PM

Discovery Theatre

Alaska Center for the Performing Arts

Spring Finale





Linn Weeda, Music Director

LINN WEEDA

Born and raised in Alaska, Linn Weeda received his master's degree at Boston University, where he studied trumpet with Armando Ghitalla and Roger Voisin, won the concerto competition and was student of the year.

Further studies after his Master's were with Julio Tancredi in trumpet, Larry Scripp in solfege, Charles Bruck in conducting at the Pierre Monteux School for Advanced Conductors, and with Gunther Schuller in conducting at the Schweitzer Institute. He has also studied with the principal trumpeters of the Atlanta, London, Los Angeles, and Rotterdam Orchestras.

Weeda's professional career has been quite varied. As a freelancer in Boston, he was a member of a variety of orchestras on the East Coast and has been heard nationally on National Public Radio performing on baroque trumpet with the Smithsonian Chamber players.

In addition, Linn has given recitals and performed concertos in a variety of venues in New England, Mississippi, and Alaska. He has performed as a soloist with the Arctic Chamber Orchestra on tour in Alaska and China, and with the Anchorage Festival of Music. Weeda has performed the Haydn Concerto with the Anchorage Symphony, and has appeared with the Suwon Philharmonic in Korea, the UAA Wind Ensemble and given recitals in New York.

As a conductor, Linn has led touring orchestras in a variety of locations in the United States, Australia, New Zealand and Germany. He has been music director of the Fairbanks Youth Symphony and founded the Tupelo, Mississippi Community Orchestra. In New England, he conducted a variety of ensembles and was staff conductor of the Greater Boston Youth Symphony. He has guest conducted a variety of orchestras, including the Fairbanks and Anchorage Symphonies. He has worked with the Anchorage Festival of Music, most recently as conductor of a concert of baroque music.

His work as conductor in the theater includes performances of the LloydWebber musicals "Jesus Christ Superstar" and "Evita." He has regularly conducted the Anchorage Symphony in the Annual Halloween concert and in Young People's Concerts.

Currently Linn is Assistant Music Director and Principal Trumpet of the Anchorage Symphony, Principal Trumpet of the Anchorage Opera and the Anchorage Festival.

In addition to his many credits as a performer, Linn has taught a variety of musical subjects in various settings ranging from marching band in public schools to university courses. He has taught at King's Lake Music Camp, UAF Summer Fine Arts Camp, and the Fairbanks Summer Arts Festival. Currently he teaches classes in ear training, solfege, music history, music appreciation, and trumpet at the University of Alaska, Anchorage.

He makes his home in Anchorage with his wife, Mary, who is a violinist and educator.

SENIOR SPOTLIGHT



Ann Wood

Ann Wood is a four year violinist with the Anchorage Youth Symphony and a senior at Bartlett High School where she is concertmaster in the Bartlett orchestra. She has participated in All State orchestra and Solo & Ensemble competition. She teaches private lessons. She has been team captain in cross country running and track. She has received Most Valuable Player and coaches awards while maintaining a 4.0 GPA. In addition to participating in cross country running and track she also enjoys skiing and hockey cheerleading. Future plans include college and continuing to play her violin.



Joshua Wilson

String bass player **Joshua Wilson** is a senior at East High's School Within a School. He occupies the principal string bass chair in the Youth Symphony as well as the East High Concert Orchestra. In addition he has been the principal bassist at All State the last two years. He earned a superior rating at the 2000 Solo & Ensemble competition. He has been named Outstanding Youth in Philanthropy and received the Good Neighbor Award. He is senior class vice president and president of the Student Advisory Board for the Anchorage School District. He enjoys varsity soccer at East High, dancing, womanizing, comic book editing, milking cows, filming nature programs, listening to crazy rock music, going to concerts and eating chocolate. He plans to attend college and have fun while living in a van down by the river.



Elyse Yeager

Elyse Yeager is a first year violinist with the Anchorage Youth Symphony. She is also a senior at Dimond High School where she received an orchestra letter as a sophomore. Also while a sophomore she received an academic letter, and an academic gold star (4.0+ GPA) in grades 10 through 12. She received activity letters in grades 11 and 12 for the National Honor Society and Art Club. She was language arts 'student of the year' in grades 9 and 10. She likes playing the low whistle (a type of Irish flute) and cross country skiing. She plans eventually to teach high school or college level English.

SENIOR SPOTLIGHT

Erin Swieter is a senior at Service High School and a three year member of the Anchorage Youth Symphony in the violin section. She also participated in All State orchestra for three years, has played in "Oliver" the musical, and participated in Solo & Ensemble competition. She has attended the National Student Leadership Conference in Washington, DC, and in the summer of 2001 participated in both UDOC and Girls State. She likes swimming, track, triathlons, hiking and camping, and playing poker. She hopes to become a physician with a specialty in pediatrics or orthopedics.



Erin Swieter

Andres Martinez is a two year member of the Anchorage Youth Symphony where he plays in the cello section. He is also a senior at Bartlett High School. He has taken piano lessons since he was 5 years old and 6 of those years he has been a student of Dr. Timothy Smith. He also plays percussion in a church band.



PROGRAM

SPRING FINALE

ANCHORAGE YOUTH SYMPHONY

Linn Weeda, conductor

Overture to *Egmont*, Op. 84 Ludwig van Beethoven
Variations on a theme by Joseph Hayden, Op. 56a Johannes Brahms

- I. Theme
- II. Variation 1: Poco piu animato
- III. Variation 2: Piu Vivace
- IV. Variation 3: Con moto
- V. Variation 4: Andante con moto
- VI. Variation 5: Vivace
- VII. Variation 6: Vivace
- VIII. Variation 7: Grazioso
- IX. Finale: Andante

A special concert by the Nunaniq Dancers from the Bethel Alternative High School

INTERMISSION

Concerto for Violin and Orchestra, Op. 35 Peter Ilyich Tchaikovsky
Dr. Lee Wilkins, violin

From the Music Director:

Tonight's concert is a culmination, not only of our season of work, practice and performances, but also of several years of dreaming and planning. Not only are we presenting music of timeless beauty, we are proud to introduce a visiting dance troupe from Bethel.

Why would we present a Native dance troupe on our concert? Recently, a contingent of the Youth Symphony (noted in the personnel list in this program) performed at the Camai Festival in Bethel. It was a wonderful, eye-opening trip for all of us. As part of the program (funded through a generous grant from the Alaska Humanities Forum), we wanted to bring a bit of the Yupik culture to our concerts, just as we had shared a bit of Anchorage culture with Bethel.

A special treat is tonight's performance with Dr. Lee Wilkins, who is a professor at Eastman School of Music. I have known Lee for many, many years, and have admired his work and artistry. He is an inspiring musician. To brag a bit, he is an alumnus of the Anchorage Youth Symphony. Anchorage can be proud of him, and it is with great pleasure and joy that we perform with him.

SOLOIST BIOGRAPHIES

Lee Wilkins, born in Anchorage, Alaska, has recently been appointed Associate Professor of Music at the Eastman School of Music in Rochester, New York. Concertmaster of the Erie Philharmonic for 13 years, Dr. Wilkins has a diverse performance background that includes local, national and international appearances.

While residing in New York City, he served as concertmaster and soloist with many of the city's finest orchestras, performing across the United States, Europe and the Far East.

Dr. Wilkins was recently invited to perform as soloist with the Shumen Philharmonic in Bulgaria. In 1988 he was a featured performer at the Olympic Games in Seoul, Korea, where he performed concerts of traditional European and American music as well as concerts melding traditional Korean music with western instruments and sounds.



Dr. Lee Wilkins

Founder and first violinist of the Hampshire String Quartet, Wilkins toured extensively across the United States and Europe, performing and commissioning new compositions for string quartet. These concerts culminated in a Carnegie Hall debut, recordings with Opus One, Musical Heritage Society, CMS and CRI records as well as concerts at Alice Tully Hall, Merkin Hall and the 92nd St. "Y". In addition, the quartet became artists in residence at Columbia University and City College of New York.

A versatile and multi-genre performer, Wilkins has performed for such diverse events as the 350th Anniversary of Harvard University, the Montreal Comedy Festival, Garrison Keillor's "A Prairie Home Companion," and the PBS film "Bach to the Future." He has even been spotted performing with several orchestras on the Musical Saw and a fishing pole!

He has been a member of the Chautauqua Symphony Orchestra since 1982. In 1989 he was a founder of the Chautauqua Chamber Music Society, which performs annually at Chautauqua Institution, The Eastman School of Music, the Anchorage Festival of Music, Allegheny College and Nazareth College.

As a violin soloist, Wilkins has performed concertos with the Shumen Bulgaria Philharmonic, the Erie Philharmonic, the Anchorage Symphony, the Alaska Festival of Music, the Chautauqua Symphony, the Chautauqua Festival Orchestra, the Chautauqua Chamber Orchestra, the Fredonia Chamber Players, the Scranton Bach Festival, the June in Buffalo Orchestra, the Fairfield Chamber Orchestra, the Erick Hawkins Dance Company orchestra and the EPOCH Ensemble.

Wilkins' solo performances have been described by the New York Times as "magical" and "elevated to a level of enchantment." His former teachers include Ivan Galamian, Dorothy DeLay and Josef Gingold.

As an educator, Dr. Wilkins has been a full-time Professor of Music at Mercyhurst College, Allegheny College and Eastman School of Music. He holds a Bachelor and Master of Music Degree from Indiana University-Bloomington and a Doctorate from SUNY-Stony Brook.

As a composer, he has written a full-length comic ballet, "The Little Mermaid," which has been performed by three different ballet companies since 1993. The Central Illinois Ballet has commissioned Dr. Wilkins to compose a new ballet based on "Aladdin". In addition, Wilkins composes educational and humorous pieces for symphonies, school orchestras and chamber groups.

SOLOIST BIOGRAPHIES

Dr. Wilkins is currently Music Director of the Peoria Ballet, the Central Illinois Ballet, the Allegheny Civic Symphony and the EPOCH Ensemble. As a conductor, he has conducted the Erie Philharmonic, the Chautauqua Chamber Orchestra, the Fredonia Chamber Players, the Anchorage Festival of Music Orchestra, the Scranton Bach Festival Orchestra, the Western State College Orchestra, the Mercyhurst College Symphony and Ballet Orchestra, the Chautauqua Regional Youth Orchestra, the Jamestown Civic Orchestra and the Pennsylvania Regional High School Orchestra Festival.

Dr. Wilkins performs on a 1771 Ferdinand Gagliano violin made in Naples, Italy, as well as a 1697 Vincenzo Ruggieri from Cremona, Italy.

Alaska String Camps, Inc.

This years' camps are an opportunity not to be missed!

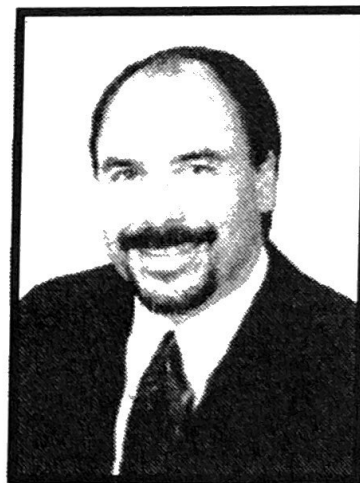
Scott Laird, national string and ZETA electric violin clinician, will be music director for all three camps. Join us for a fun filled learning experience.

Elementary Camp July 19-21
Intermediate Camp July 15-18
High School Camp July 23-26

For more information or application, please visit our website at:

www.mmusiconline.com/camp.html
or call 696-CAMP (2267)

Scott Janssen
President and
General
Manager



We enthusiastically support the Anchorage Youth Symphony

Evergreen
MEMORIAL CHAPELS
FUNERAL HOMES

The Only Call You Need to Make

Anchorage • 279-5477 • Eagle River

ANCHORAGE YOUTH SYMPHONY

Violin I

Emily Bliss*
 Concertmaster
 Erika Beheim*
 Sarah Hillebrand*
 Adam Stewart*
 Noriyasu Harada
 Amanda Kerr
 Tiffany Stewart*
 Jasmine Hung
 Elan Wong
 Anna Remillard
 Ann Wood*
 Yin Tong
 Erin Swieter*
 Martha Leffek
 Robert Yoon*
 Melissa Weiler

Violin II

Allison Davis
 Principal
 Christina Layne
 Danielle Bachman*
 Elliott Larsen
 Yuta Sato
 Elyse Yeager
 Jay Han
 Justin Lee
 Lizzie DeYoung
 Kaity Morris
 Lesley Lepley
 Shannon Kuhn
 Kristy Wood*
 Joyce Kim

Viola

Katie McVey*
 Principal
 John Hanson*
 Britta Helm
 William Garner
 Ragan Whatley
 Britt Moody*
 Gretchen Wellman
 Makeda Perryman
 Kara Beard
 Morgan Jessee
 Ruth Fischer

Cello

Kaiya Reeve*
 Principal
 Nick Riordan*
 Jessica Lee*
 Kara Davis
 Blake Langdon
 Brandon Park
 Chris Kosednar
 Claire Knudsen-Latta*
 Kathryn Runyon-Walker
 Kelsey Johnston
 Andres Martinez
 Bailey Lyon

String Bass

Joshua Wilson*
 Principal
 Marla Smithhisler*
 Nora Smithhisler
 Larissa Kozisek

Flute

Gabrielle Jolivette*
 Principal
 Hana Freymiller
 Cecelia Frey also piccolo
 Fabienne Fuerer*

Oboe

Connor Ross
 Principal
 Evan Privoznik*

Clarinet

Noah Schoenberg*
 Principal
 Xavier Engle*
 Dylan Schick
 Allison Magby

Bassoon

Gillian Denton
 Principal
 Megan Bledsoe
 Adam Advincula

Horn

Catherine Massey*
 Principal
 Timothy Risi
 Brian Long
 Kate Compton

Trumpet

Logan Bean*
 Principal
 Hannah Bjornstad
 Kwai-Lin Bloomfield
 Jonathan Crandall*

Trombone

David Martinson
 Principal
 Jason Woscek
 Hans Thompson

Tuba

Lauren Risby
 Principal

Percussion

Loren Webb
 Principal
 Tommy East
 Timothy Lum-Yee

* Chamber Orchestra members who recently performed in Bethel.

Full Season Scholarship

sponsored by Richard and Nancy Morris

AYS Sponsor-A-Chair Program

Flute: Gabrielle Jolivette

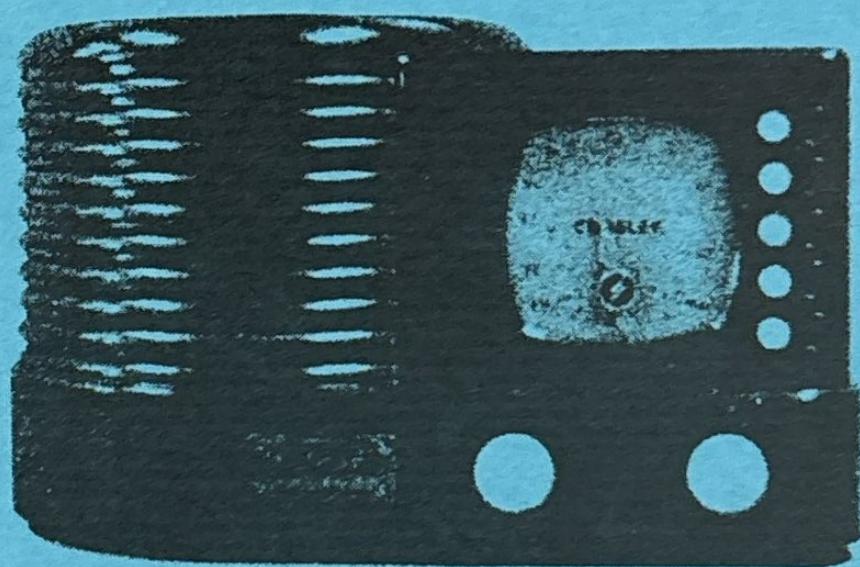
sponsored by Bardon Simons and Darleen Fernandez

Flute: Cecelia Frey

sponsored by Jim and Leslie Frey

KLEEF FM 98

Your Radio Concert Hall



at 98.1 fm the music's always classical