

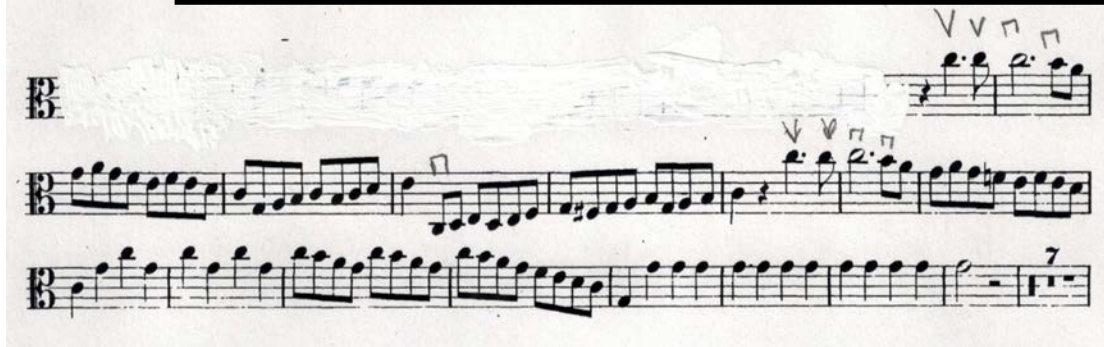
REQUIREMENTS

1. Major scales up to four sharps and four flats. Play as many octaves as you can
2. A short solo of your choice, that shows the judges your sound, rhythm, and technique
3. [REDACTED] the following excerpts
4. Sightreading

Mozart: Symphony No. 41, 4<sup>th</sup> Movement, bars 19-35

Molto Allegro (in 2) half note=ca 116

This excerpt is in 2/2 or cut time. Please play this only as fast as you can make it sound comfortable. [REDACTED]



Tchaikovsky: Symphony No. 6 'Pathetique', 1<sup>st</sup> movement

Quarter note=ca 56. Do not play the flute II cues-start on the F#

[REDACTED]

Andante  
senza sord. V

130 Fl. II *mf*

134 *incalzando ff* *riten.* *mf* *f*

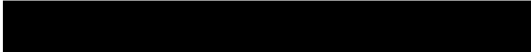
138 *incalzando ff* *riten.* *mf* *f*

142 Moderato assai *mf* *mp* *p* G

148 *pp* *dim.* *rallentando* *ppp*

Printed musical score for Flute II, Tchaikovsky Symphony No. 6, 1st movement. The score is written on five staves in bass clef with a key signature of two sharps (F# and C#). The tempo markings are Andante, Moderato assai, and rallentando. The dynamics range from mf to ppp. The score includes various musical notations such as slurs, accents, and dynamic markings. The first staff is marked '130' and 'Fl. II'. The second and third staves are marked '134' and '138'. The fourth staff is marked '142' and 'Moderato assai'. The fifth staff is marked '148'. There are handwritten annotations above the staff, including 'V' and 'v' symbols, and a 'G' at the end of the fourth staff.

**Brahms: Symphony No. 4, 4th movement**  
Quarter note=ca 120.



The image shows a musical score for the fourth movement of Brahms' Symphony No. 4. It consists of four staves of music, all in 2/4 time and the key of D major. The first staff begins at measure 40 and is marked with a box 'B' and a forte 'f' dynamic. It features a melodic line with slurs and a crescendo marked 'cresc. sempre più'. The second staff starts at measure 47 and is marked 'espress. cresc.'. The third staff begins at measure 54 and is marked with a box 'C' and a dynamic of 'f f più f'. The fourth staff starts at measure 60 and is marked 'cresc.' and 'ff'. The music is characterized by its rhythmic drive and dynamic intensity.